

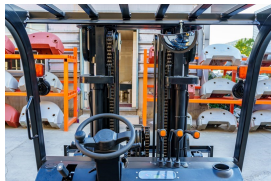
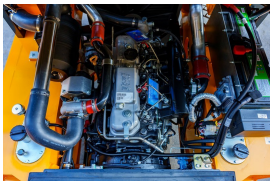
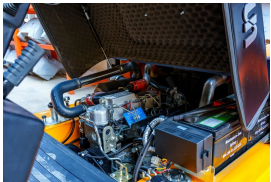
UN Forklift
FDMINI50T
 HANGZHOU, Zhejiang, China

onQ-64900

FORKLIFTS - COUNTER BALANCE ICE
 NEW - SALE



Date Listed	8 Jan 2025
Reference	FDmini50T
Power Type	Diesel
Lift Capacity	11,023 lb(5,000 kg)
Mast Type	Triplex (3 Stage)
Maximum Lift Height	177 in(4,500 mm)
Tyre Type	Pneumatic
Machine Height (Mast Lowered)	93 in(2,370 mm)
Machine Features	Mast full free lift Mast container entry Load backrest Overhead Guard Front wheel drive Extra valve(s) Side shift



ADDITIONAL INFORMATION

UN Counterbalanced Diesel Forklift provides you with multiple choices as per your real needs, We have different reliable engines for choice. All these engine have been tested that they can be trusted through all kinds of tough working condition and get recognition from millions of client across the worldwide. These engines are specifically designed for the forklift use, with low fuel consumption, less noise and vibration, all these features improve the whole performance of the forklift. High efficiency is also delivered through the performance of the axles, the excellent brake system make sure the forklift operate with safety, the steering axle provides prompt and precise feedback to the driver when steering. The operator cabin is reasonable-designed considering its space, layout of the steering column and instrument displayer, file storage and suspension seat. The wide-view mast provides the operator with a wide visibility which improves the efficiency and guarantee the safety. Because of the reasonable layout of engine, transmission, axle, counterbalance and chassis, the whole truck is with low gravity, this feature guarantees the stability and driving safety of the forklift. Robust and Reliable Diesel Engine Ergonomically design Wide-view Mast and Container Mast for Choice Fully Integrated Frame and Suspension Chassis Excellent Cooling System and Heat Releasing System Easy to maintain and repair Lower Gravity Emergency Stop Switch Multiple Option Available for Choice