

F. UCHIYAMA & CO., LTD

Noboru Uchiyama

Yokohama, Japan

E. info@f-uchiyoama.com, Ph. +81 45 663 6677



Mitsubishi

FD200

1992

Yokohama, Japan

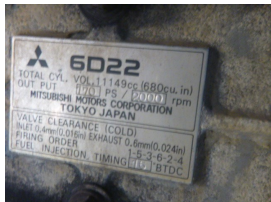
onQ-65304

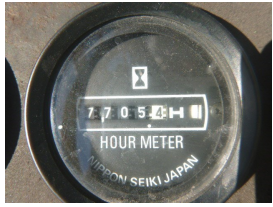
HEAVY LIFTERS & HANDLERS - HIGH CAPACITY FORKLIFTS
USED - SALE

Date Listed	16 Apr 2025
Serial Number	F11-10126
Machine Hours	7705
Power Type	Diesel
Lift Capacity	44,092 lb(20,000 kg)
Mast Type	Duplex (2 Stage)
Maximum Lift Height	118 in(3,000 mm)
Tyre Type	Pneumatic
Machine Height	155 in(3,930 mm)
Machine Condition	Condition GOOD ***

ADDITIONAL INFORMATION

2440mm Fork





BETTER, SMARTER, MORE FOCUSED, EASY AS.

- Machinery-onQ Americas is a platform for the sale and acquisition of both new & used mobile machinery in both North America and South America.
- The platform features forklifts, warehouse equipment, container handlers, log handlers, aerial work platforms, port cranes, tow trucks, terminal tractors, industrial sweepers and forklift attachments.

Machinery-onQ is a Business Platform by ForkliftAction Media.

This platform is produced by FORKLIFTACTION



<https://americas.machinery-onq.com/machine-heavy-lifters-handlers-high-capacity-forklifts-mitsubishi-fd200-1992-used-sale-japan/65304>

© ForkliftAction Media 2025