

**Unknown brand
CUMMINS-QSB6.7CM850
2010**

Hornweg, Netherlands

onQ-66279

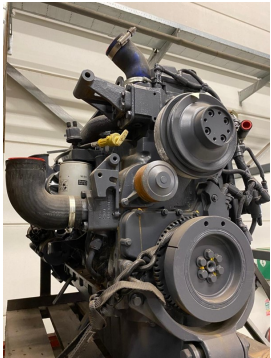
OTHER
USED - SALE

Date Listed 27 Feb 2025

Reference TR.01.0402C1U

ADDITIONAL INFORMATION

Cabin: 1 Center of gravity: 0 Accessories: Completely overhauled
Cummins QSB6.7 CM850 Engine (CM2850), S/N Engine: 21968563,
FLC Part number: TR.01.0402C1U



Product Information

Engine Diagram: 21968563

CONFIGURATIONS AND MODEL NAMES	
EPA Model Name	Not Available
Marketing Engine Configuration #	0312010020
Marketing Model Name	QSB6.7
Service Model Name	QSB6.7CM850(MC850)
Technical Engine Configuration #	0312010020
ENGINE BUILD DETAILS	
Build Date	2010-02-21 10:00:00Z
Build Plant	DAK - DAKEN, BOSTON OPERATIONS
CPL #	426
Ship Date	04-08-2010
Ship Order	Not Available
Manufacture Start Date	Not Available
TECHNICAL SPECIFICATION DETAILS	
ECM Code	Not Available
Fuel Pump Part #	0246008
Fuel Pump Calibration	Not Available