

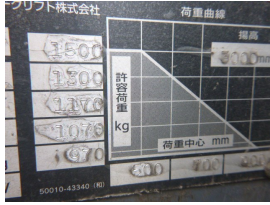
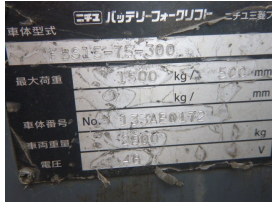
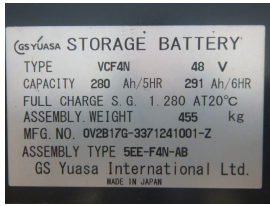


Nichiyu
FBS15-75-300
2013
 Yokohama, Japan

onQ-65295

FORKLIFTS - SIDE LOADING
 USED - SALE

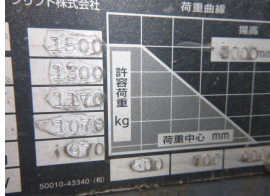
Date Listed 14 Jan 2025
Serial Number 133AE0172
Machine Hours 12744
Power Type Battery Electric
Lift Capacity 3,307 lb(1,500 kg)
Mast Type Duplex (2 Stage)



GS YUASA STORAGE BATTERY
 TYPE VCF4N 48 V
 CAPACITY 280 Ah/5HR 291 Ah/6HR
 FULL CHARGE S.G. 1.280 AT20°C
 ASSEMBLY WEIGHT 455 kg
 MFG. NO. 0V2B17G-3371241001-Z
 ASSEMBLY TYPE SEE-F4N-AB
 GS Yuasa International Ltd.
 MADE IN JAPAN

TOTAL 12744.4 hr
 6月 8日(※) 10:48

車体型式 ニチユ バッテリーフォークリフト ニチユエフ
 最大荷重 1500 kg Δ 500 mm
 車体番号 No. 133AE0172
 車両重量 1070 kg
 電圧 48 V



合格証
 CERTIFICATE
 M.F.G: Jul . 2013
 ニチユ三菱フォークリフト株式会社
 MITSUBISHI NICHYU FORKLIFT CO., LTD.

